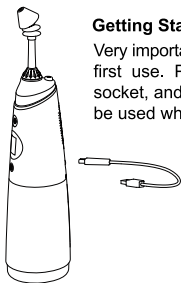


Replaceable tip/accessories are available from retailers



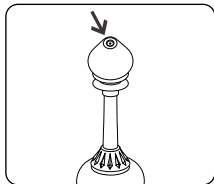
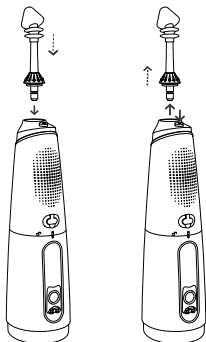
Getting Started

Very important! Please fully charge the device before first use. Plug the USB cable into the charging socket, and connect the power. The product cannot be used when charging.

Installing and removing tips

Insert tip into the center of the knob of the nasal irrigator handle until it is properly in place.

To replace or remove the tip from the handle, press the tip eject button and pull the tip from the handle.



Make sure the blue silicone bulb is pushed down fully on the white sinus tip so there is no interference with water flow. The exit hole of the sinus tip should reach the exit hole of the blue silicone bulb.

Mix one saline packet with 240 mL (8 fl oz) volume of lukewarm, distilled, micro-filtered (1 micron or less) or previously boiled and cooled down water.

Fill reservoir by rotating and removing reservoir from the upper white motor unit as shown in figure 1. Replace the white motor unit over the reservoir and rotate until locked. Swirl the unit thoroughly to dissolve the mixture. You can also fill by lifting the small flip top on reservoir.

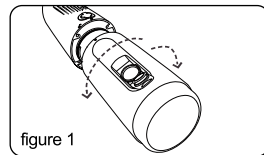


figure 1

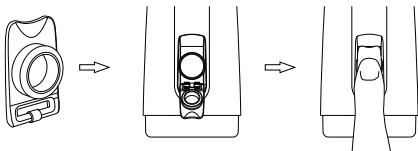
- The power and mode buttons are on the front panel. Press the power button to turn the unit on. Press the power button again to power off. The SinuPulse Traveler will default to the setting that was last in use.
- Press the mode button to cycle through the various rinse settings: GENTLE, MEDIUM, HIGH, and WAVE. You can also select the mode before turning the unit on.
- After 120 seconds of continuous operation, the device will automatically shut down.
- Battery charge is displayed during use; press the mode button to detect the battery strength when not in use.
- Charge SinuPulse Traveler when the battery indicator displays low. The Traveler cannot be used while charging.
- When charging, the battery indicator will display until full.
- Charger: AC 100-240VAC, 50/60Hz, output 5V 1A

- ◆ Position unit to ensure that it is in the best working condition
- ◆ Nasal tip may be turned 360 degrees to adjust the direction of water flow.
- ◆ When using the product for the first time, please start from the lowest setting (GENTLE) and increase the pressure as is comfortable.



If the tank cover is off

1. Align the gasket of the tank cover with the tank port;
2. Press in until you hear a click.

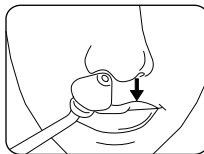


Step 1: Standing in front of a sink, bend forward slightly to your comfort level and tilt your head down. Keep your mouth open, without holding your breath, and place the nasal tip against your nostril.

Step 2: Press the blue power button and the solution will enter the nostril and soon begin to drain from the opposite side. Depending on the head position, a small residual solution may drain from your mouth. It is best to spit it out. However, there is no harm if accidentally swallowed. Stop if you feel any discomfort, pain or pressure during the irrigation.

Step 3: Continue to rinse until half of the solution is used. Press the power button to stop and switch nostrils. Now repeat steps 1 and 2 and rinse the opposite nasal passage or nostril. Press the power button again to stop when finished.

Step 4: Blow your nose very gently, without pinching the nose completely to avoid pressure on eardrums.

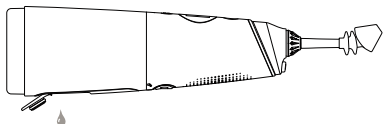


Cleaning Directions:

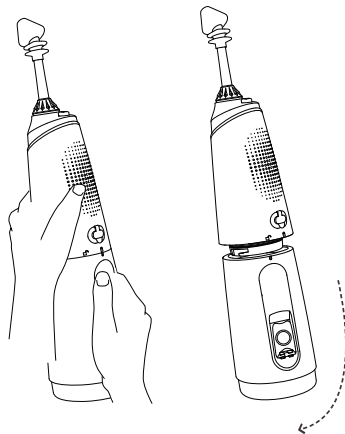
Rinse the SinuPulse Traveler[®] after each use by running clean water through the unit and dry with a clean-lint free towel and allow to air dry. We recommend running a dilute vinegar solution (2:1) through the unit monthly to help disinfect and decalcify the unit.

When Finished

Turn the unit off. Lift the flip top on the reservoir as shown, and empty any liquid left in the reservoir. Turn the unit on till the reservoir is empty and turn the unit off.



To remove the reservoir, hold the unit with your left hand and slide the reservoir down counterclockwise with your right hand.



Problems	Reasons	Solutions
Leakage between tip and knob	Damaged sealing o-ring, tip out of place	Lubricate sealing o-ring with small application of Vaseline and reinsert
Water reservoir leaking	Dry sealing o-ring	Lubricate sealing o-ring with small application of Vaseline
Pressure is not enough	Using under low voltage	Use after fully charged
Device cannot get started	Using under low voltage	Use after fully charged
No water flow	Blocked hose filter	Clean the filter

If you can not solve the problems according to the above methods, please consult the dealers or go to the designated after-sales service for maintenance.

After-sales service

Health Solutions Medical Products Corporation warrants the purchaser that this product is free from defects in material and workmanship for 12 months from the date of purchase. If the product proves to be defective, Health Solutions will repair or replace it at no charge provided the product has not been abused, misused, damaged, or altered. Irrigation tips, reservoir, and other accessories are specifically excluded.

To order replacement parts or report a problem, please contact Health Solutions Medical Products Corporation:

Voice: 800.305.4095 (Toll free within the continental US)
 Voice: 310.837.3191 (Outside the US, Alaska, and Hawaii)
 Fax: 310.837.1065

Email: sales@sinupulse.com
 Website: www.sinupulse.com