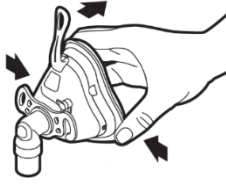


# Ascend<sup>®</sup> Full Face

replaceable AIR<sup>®</sup>gel<sup>®</sup> cushion mask

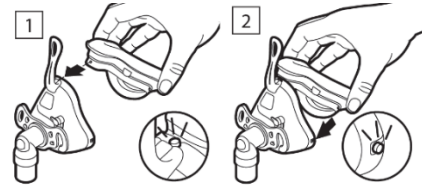
## QUICK START GUIDE

### ASSEMBLY



The Ascend Full Face Mask comes with 3 cushion sizes (S, M, L). The mask comes with the M size attached.

To change the mask cushion, separate the cushion from the mask frame by gently squeezing the cushion ring (not the Airgel cushion) near the left and right alignment pins while pulling away from the mask.

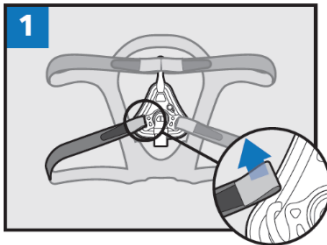


Select the proper cushion size.

FIGURE 1: Ensure the cushion is oriented correctly by positioning the top alignment pin as shown.

FIGURE 2: With the top pin in place, gently push the bottom 2 cushion alignment pins into the notches. Ensure the Support Tabs stay outside the Mask Shell.

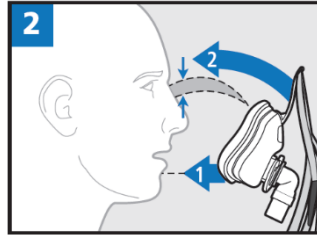
### FITTING



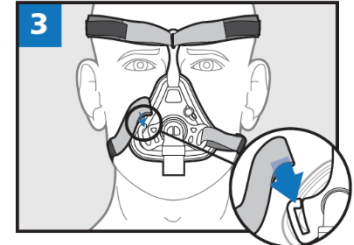
Place the headgear light gray side up, with the shorter straps on top.

Place the mask in the middle of the headgear and thread 3 straps as shown.

Leave the bottom left strap unthreaded.

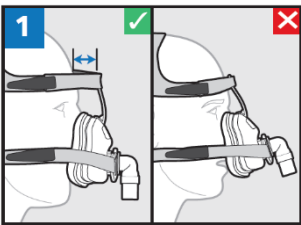


Seat the bottom cushion of the mask at the crease of the chin with your mouth slightly open and tip the mask up to contact the nose.



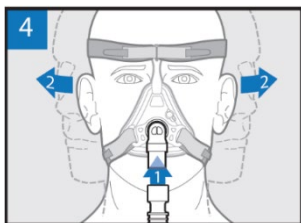
Pull the headgear up and over your head and slip the unhooked strap into the open Quick Release Slot.

### ADJUSTMENT

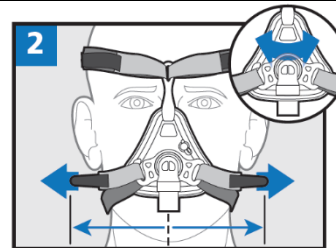


When adjusting the fit of your mask, ensure the flexible Spacebar **DOES NOT** contact the forehead when tightening the top straps.

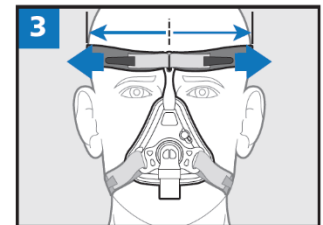
Only the blue Airgel cushion should contact the skin. The bottom cushion should not lift off the face.



Connect the mask to CPAP tubing and breathe normally, while moving head from side-to-side. The Ascend Full Face Mask should stay in place comfortably.



Adjust lower headgear straps by loosening or tightening the fastener tabs



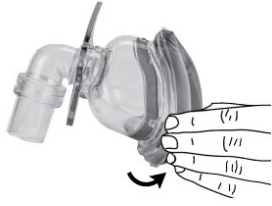
Adjust upper headgear straps by detaching fastener tabs and pull straps forward to center mask over face. Ensure headgear is centered by aligning the two straps equally. Then pull the straps back, adjust strap tension and affix tabs.

# Ascend<sup>®</sup> Nasal

replaceable AIR<sup>®</sup>gel<sup>®</sup> cushion mask

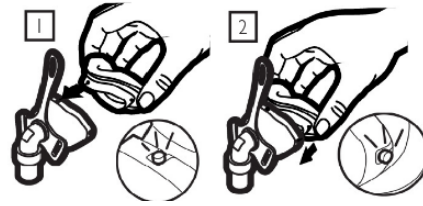
## QUICK START GUIDE

### ASSEMBLY



The Ascend Nasal Mask comes with 3 cushion sizes (S, M, L). The mask comes with the M size attached.

To change the mask cushion, separate the cushion from the mask frame by gently squeezing the cushion ring (not the Airgel cushion) near the left and right alignment pins while pulling away from the mask

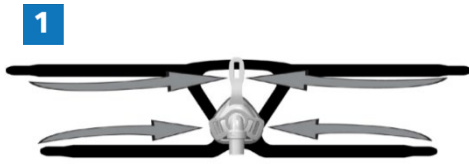


Select the proper cushion size.

FIGURE 1: Ensure the cushion is oriented correctly by positioning the top alignment pin as shown.

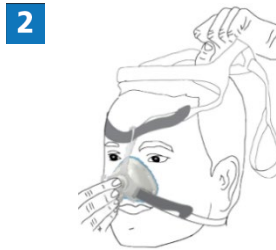
FIGURE 2: With the top pin in place, gently push the bottom 2 cushion alignment pins into the notches. Ensure the Support Tabs stay outside the Mask Shell.

### FITTING



Place the headgear light gray side up, with the shorter straps on top.

Place the mask in the middle of the headgear and thread the 4 straps as shown.



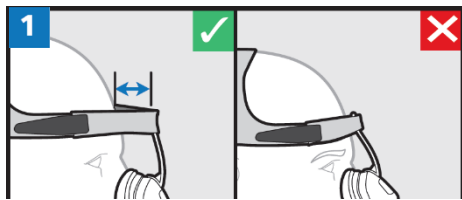
Unhook strap from open Quick Release slot.

Seat the bottom cushion of the mask at the between your nose and mouth and tip the mask up to contact the bridge of your nose.



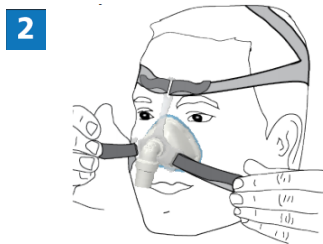
Pull the headgear up and over your head and slip the unhooked strap into the open Quick Release Slot.

### ADJUSTMENT

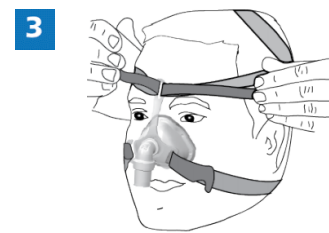


When adjusting the fit of your mask, ensure the flexible Spacebar **DOES NOT** contact the forehead when tightening the top straps.

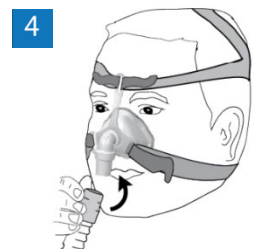
Only the blue Airgel cushion should contact the skin. The bottom cushion should not lift off the face.



Adjust lower headgear straps by loosening or tightening the fastener tabs



Adjust upper headgear straps by detaching fastener tabs and pull straps forward to center mask over face. Ensure headgear is centered by aligning the two straps equally. Then pull the straps back, adjust strap tension and affix tabs.



Connect the mask to CPAP tubing and breathe normally, while moving head from side-to-side. The Ascend Nasal Mask should stay in place comfortably.